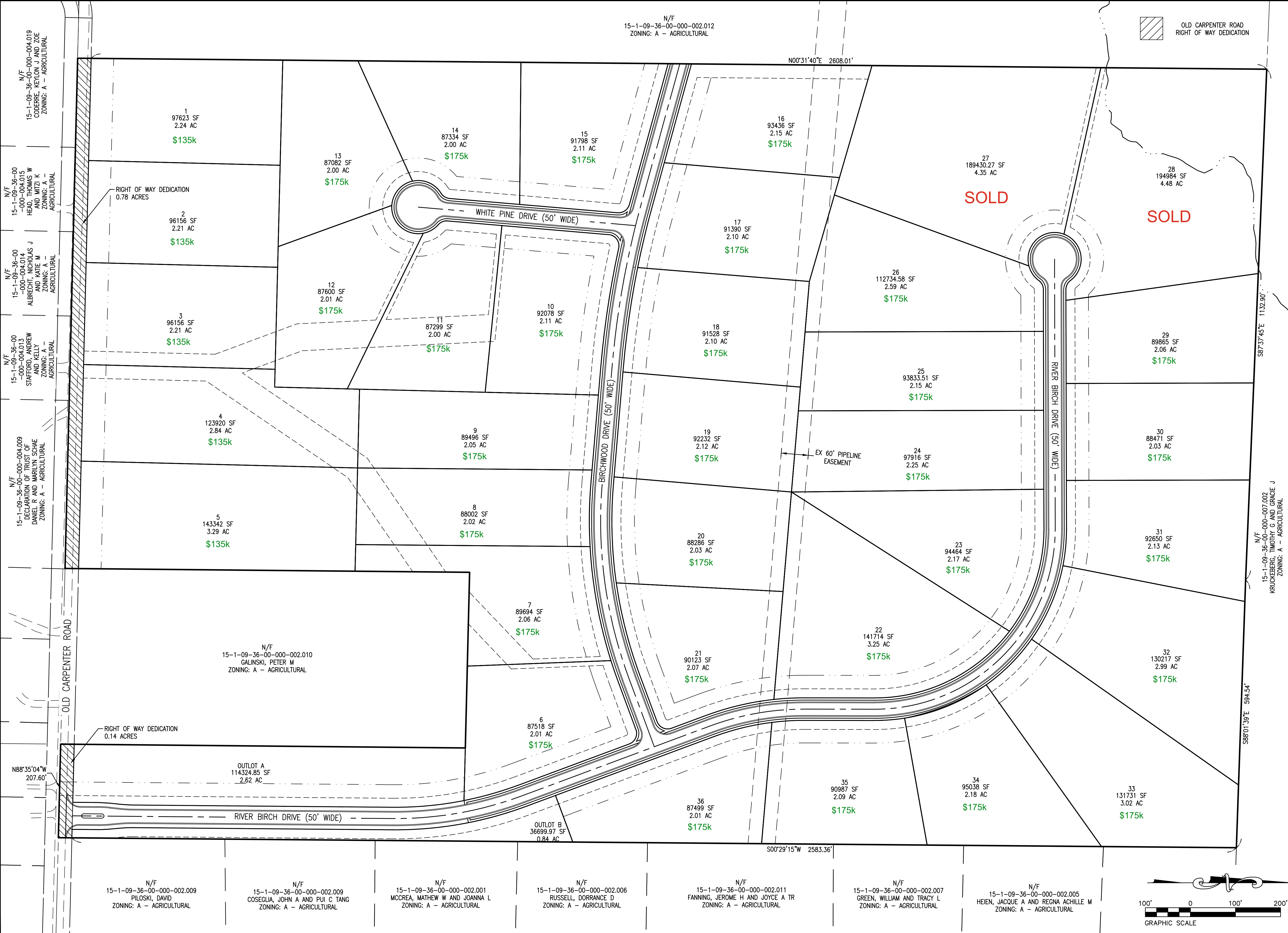


P:\2023\230933\4 CAD - DWG\4.5 Sub\Subdivision Improvement Plans\230933 - Site Plan.dwg Plotted By: bgebeke



TWM
**CONSULTING ENGINEERING
 GEOSPATIAL SERVICES**

ILLINOIS SWANSEA
 COLUMBIA
 GLEN CARBON
 PEORIA
 DECATUR

MISSOURI ST. CHARLES
 ST. LOUIS
 COLUMBIA

TENNESSEE NASHVILLE
 CHATTANOOGA
 ATHENS

**THOUVENOT, WADE
 & MOERCHEN, INC.**

GLEN CARBON OFFICE
 204 EVERGREEN LANE, UNIT B
 GLEN CARBON, ILLINOIS
 62034
 (618) 656-4040
 WWW.TWM-INC.COM

PROF. LICENSE	NUMBER
IL. PROF. DESIGN FIRM	184-001220
IL. PROF. ENGR. CORP.	62-035370
IL. PROF. STR. ENGR. CORP.	81-005202
IL. PROF. LAND SURV. CORP.	048-000029
KS. PROF. ENGR. FACILITY	E-3256
MO. PROF. ENGR. CORP.	001528
MO. LAND SURVEYING CORP.	000346
TN. PROF. ENGR. FIRM	8974

SEAL

SIGNATURE:
 DATE SIGNED:
 LICENSE EXPIRATION: 11/30/2025

REV.	DATE	DESCRIPTION
△		
△		
△		
△		

DRAWN BY: BBG
 DESIGNED BY: JJV
 CHECKED BY: JJV
 APPROVED BY: JJV
 PROJECT NO: 230933

PROJECT:
 CEDAR RIDGE SUBDIVISION
 IMPROVEMENT PLANS
 MADISON COUNTY, ILLINOIS

TITLE:
OVERALL SITE PLAN

